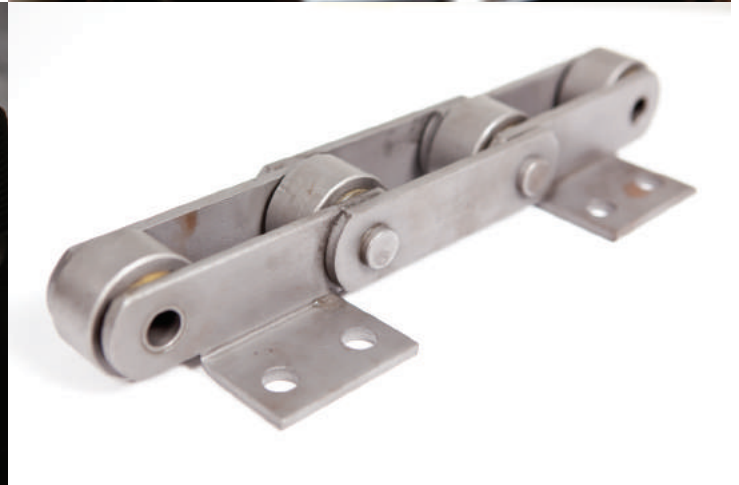




World Class Precision Engineering



High Quality Sugar Mill Chain

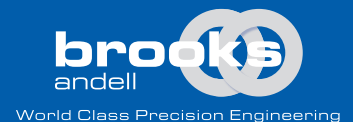
Established in the UK in 1973, the Brooks group of companies has an international reputation as a leading manufacturer and supplier of high quality engineered products.

Their approach has always been customer driven with the emphasis being put on a quality product and customer-focused service, both with pre-design advice and after sales technical support.

To complement their growing international presence, in 2005 Brooks Andell branched out and set up a manufacturing and technical centre in Asia. Our facilities both in Kuala Lumpur, Malaysia and Ningbo, China are managed by UK engineers who have spent many years producing high specification conveyor chains and sprockets for a while range of industries.

Our location enables us to provide immediate technical and product support, while giving us the flexibility in manufacturing products that satisfy the needs of our customers.

Supported by their exclusively appointed agents throughout Malaysia, Indonesia and Thailand, Brooks Andell provides an on-time delivery policy with chain and sprockets being stocked in strategic locations.



Our many years of experience enable us to **DESIGN** and manufacture a quality and reliable product.



Our product line **INSPECTION** routines monitor quality through every stage of production, giving a **CONSISTENTLY HIGH SPECIFICATION** product.



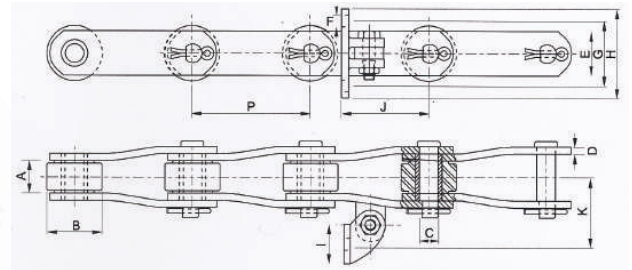
Our advice and **SUPPORT** gives you peace of mind, knowing that we are backing you up on your journey to success.



Our policy is to give the **BEST AFTER SALES SERVICE** by providing full on site **TRAINING** for all engineering staff, helping you to **MAXIMISE PRODUCT LIFE**.

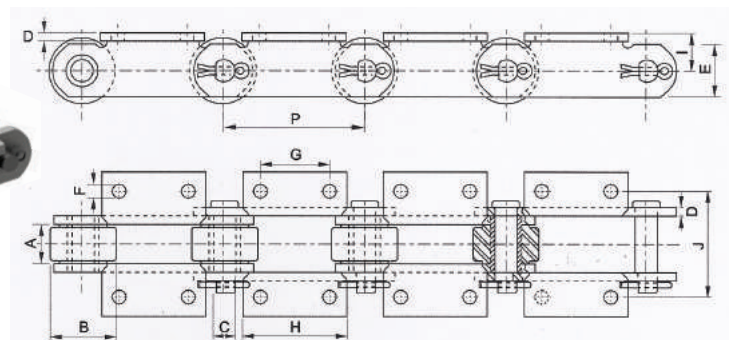
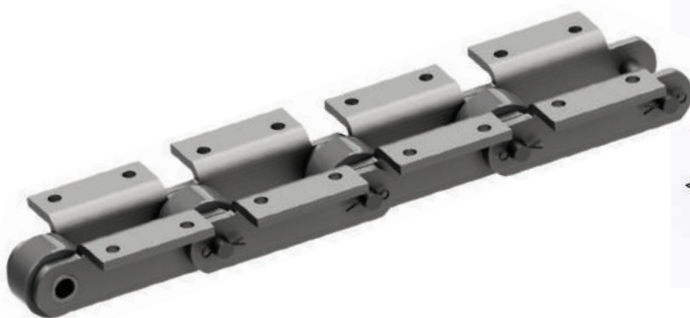
Bagasse and Cane Carrier Chain

BAGASSE CHAIN



Chain Number	Pitch mm	Breaking Load (kN)	Inside Width mm	Roller Diameter mm	Pin Diameter mm	Plate Thick mm	Plate Height mm	Attachment Hole Diameter mm	Attachment Hole Centers mm	Attachment Length mm	Attachment Width mm	Attachment Face mm	Transverse Pitch mm	Mass kg/m
	P		A	B	C	D	E	F	G	H	I	J	K	
BA9060	152.40	272	36.50	69.85	19.05	9.52	50.80	12.70	82.50	114.30	50.80	115.80	88.90	18.50
BA9061	152.40	386	36.50	69.85	19.05	9.52	57.15	12.70	82.50	114.30	50.80	115.80	88.90	20.30
BA9063	152.40	620	36.50	76.20	23.80	10.30	61.90	14.30	88.90	127.10	50.80	142.90	100.00	25.10
BA1796	152.40	445	36.50	69.85	22.23	9.52	57.15	12.70	82.50	114.30	50.80	115.80	88.90	22.90
BA2186	152.40	256	34.93	76.20	22.23	9.52	50.80	14.30	88.90	127.10	50.80	142.90	90.40	21.00

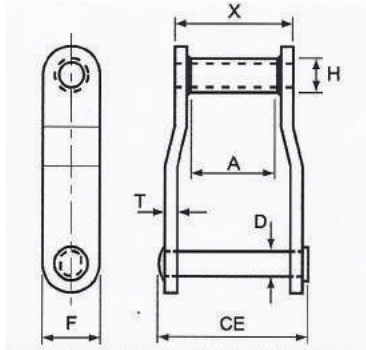
CANE CARRIER CHAIN



Chain Number	Pitch mm	Breaking Load (kN)	Inside Width mm	Roller Diameter mm	Pin Diameter mm	Plate Thick mm	Plate Height mm	Attachment Hole Diameter mm	Attachment Hole Centers mm	Attachment Length mm	Attachment Height mm	Transverse Pitch mm	Mass kg/m
	P		A	B	C	D	E	F	G	H	I	J	
BA9060	152.40	272	36.50	69.85	19.05	9.52	50.80	12.70	76.20	114.30	41.30	111.20	24.70
BA9061	152.40	386	36.50	69.85	19.05	9.52	57.15	12.70	76.20	114.30	41.30	111.20	25.30
BA9063	152.40	620	36.50	76.20	23.80	10.30	61.90	14.30	76.20	114.30	44.45	111.20	27.50
BA1796	152.40	445	36.50	69.85	22.23	9.52	57.15	12.70	76.20	114.30	41.30	111.20	26.20

Welded Steel Chain

WELDED STEEL CHAIN

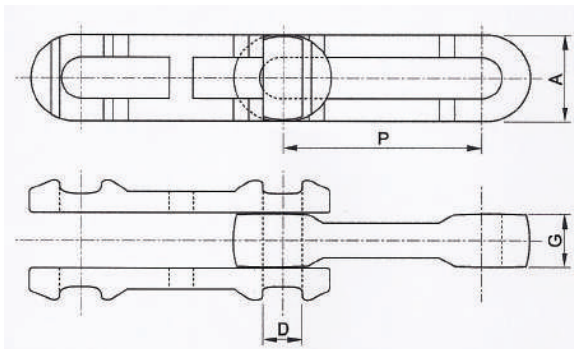


Chain Number	Pitch		Average Ultimate Strength lbf	Max Working Load lbf	Approx. Links Per Foot	Average Weight lbf/ft	CE	X	D	T	F	H	A
	mm	inches											
WR78	66.26	2.609	24000	3000	4.6	4.0	76.20	50.80	12.70	6.35	28.58	22.23	28.58
WH78	66.26	2.609	36000	3500	4.6	4.0	76.20	50.80	12.70	6.35	28.58	22.23	28.58
WR82	66.26	2.609	26000	3800	4.6	4.0	76.20	50.80	12.70	6.35	28.58	22.23	28.58
WH82	66.26	2.609	40000	4500	4.6	4.0	76.20	50.80	12.70	6.35	28.58	22.23	28.58
WR124	101.60	4.000	46000	6300	3.0	8.3	107.95	69.85	19.05	9.53	38.10	31.75	38.10
WH124	101.60	4.000	60000	7350	3.0	8.3	107.95	69.85	19.05	9.53	38.10	31.75	38.10
WR132	153.67	6.050	84000	13100	2.0	14.2	158.75	111.00	25.40	12.70	50.80	41.28	73.03
WH132	153.67	6.050	110000	15000	2.0	14.2	158.75	111.00	25.40	12.70	50.80	41.28	73.03

WH - Welded Steel Chain - fully heat treated

WR - Welded Steel Chain complete with heat treated rivets

DROP FORGED CHAIN



Chain Number	Average Pitch	Pins	Overall Width		Chain Height	Link Thickness		Rated Working Load	Average Weight	Chain Part	Brinell Hardness	Average Ultimate Strength	Sprocket Unit No.
	mm	mm	B	C	D	E	F						
	P	A	B	C	D	E	F						
X458	102.39	16	55.63	26.92	35.05	16.00	17.53	4000	3,1	Side Link Center Link Pin	311/388 331/388 363/415	57000	458
X678	153.19	22.35	76.96	35.05	50.80	20.57	25.40	7100	6,5	Side Link Center Link Pin	311/388 331/388 340/415	125000	678
698	153.19	28.70	95.25	41.40	65.79	25.40	31.75	10800	12,5	Side Link Center Link Pin	311/388 331/388 340/415	175000	698

BROOKS ANDELL - CONVEYOR CHAINS

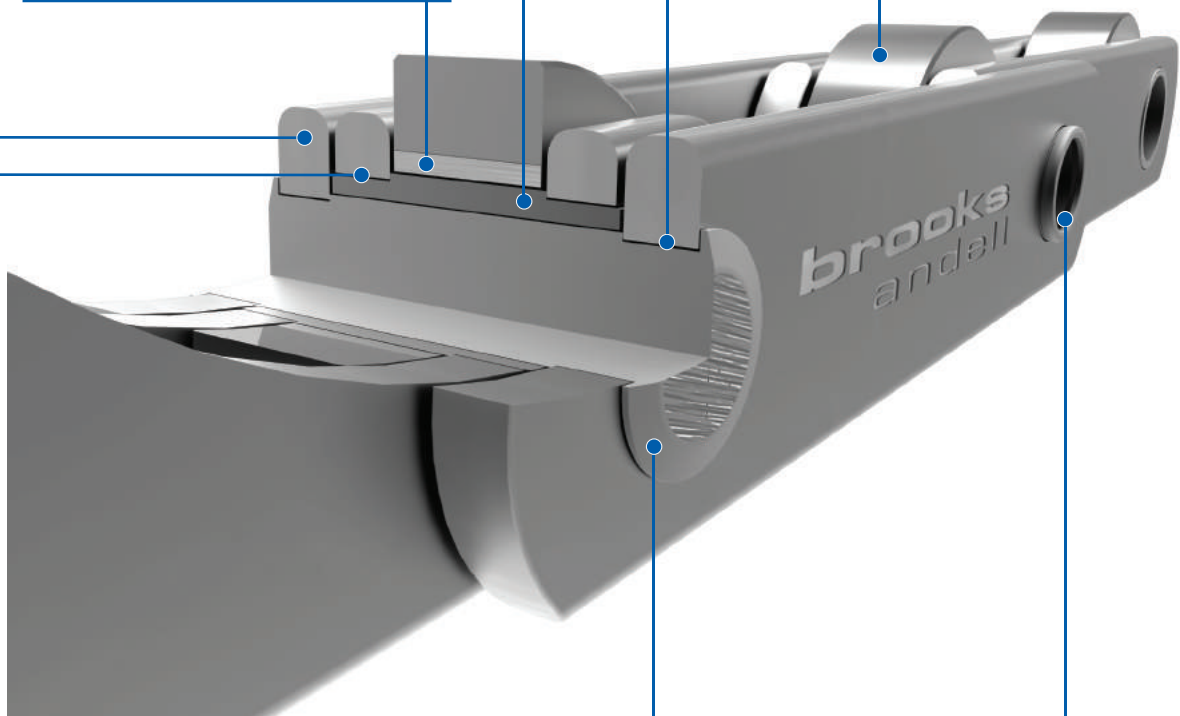
Link plates produced from high carbon cold drawn steel
The use of cold drawn steel avoids the internal stresses associated with guillotined steel strips.
The longitudinal grain flow presented in cold drawn steel helps prevent fatigue and withstand shock loads.

Case hardened alloy steel bushes precision machined from seamless tube
Ensuring minimum distortion and superior concentricity.

Bearing Pins with interference fit
All produced from fully machined bar not forged.

Optional Stainless Steel or Nitride treated liner bushes
Provides extended life in severe conditions.

Ground Hardened Rollers
Grinding the outer diameter gives excellent wear resistance and good load carrying qualities, helping to reduce wear on sprocket tooth.



Bushes with location shoulders and interference fit
For precise assembly, control on inner width. Bush shoulder length extended to form clearance between inner and outer plates to provide uniform lubrication, increased strength and life. This reduces the possibility of chain seizure.

Holes precision punched on dedicated progression tooling
Guarantees consistently high tolerance pitch control.

All attachments robot welded for consistent accuracy

BROOKS WORLDWIDE

www.brooks.ltd.uk



ENGLAND

BROOKS LTD

Causeway Park, Manchester Road
Audenshaw, Manchester M34 5UU
England.

Tel : +44 (0) 161 666 5000

Fax : +44 (0) 161 666 5050

Email : sales@brooks.ltd.uk



MALAYSIA

ra,

BROOKS ANDELL SDN. BHD.

No 30-32, Jalan PJU 3/49,
Sunway Damansara,
47810 Petaling Jaya, Selangor D.E.
Malaysia.

Tel : +6 03 7804 0407

Fax : +6 03 7804 4407

Email : sales@brooksandell.com.my



USA

BROOKS USA Inc.

2993, South Oak Way, Lakewood
Co 80227, USA

Tel : +1 303 484 1986

Fax : +1 303 484 1989

Email : brooksusa@comcast.net

Approved Distributor:

brooks
andell

World Class Precision Engineering